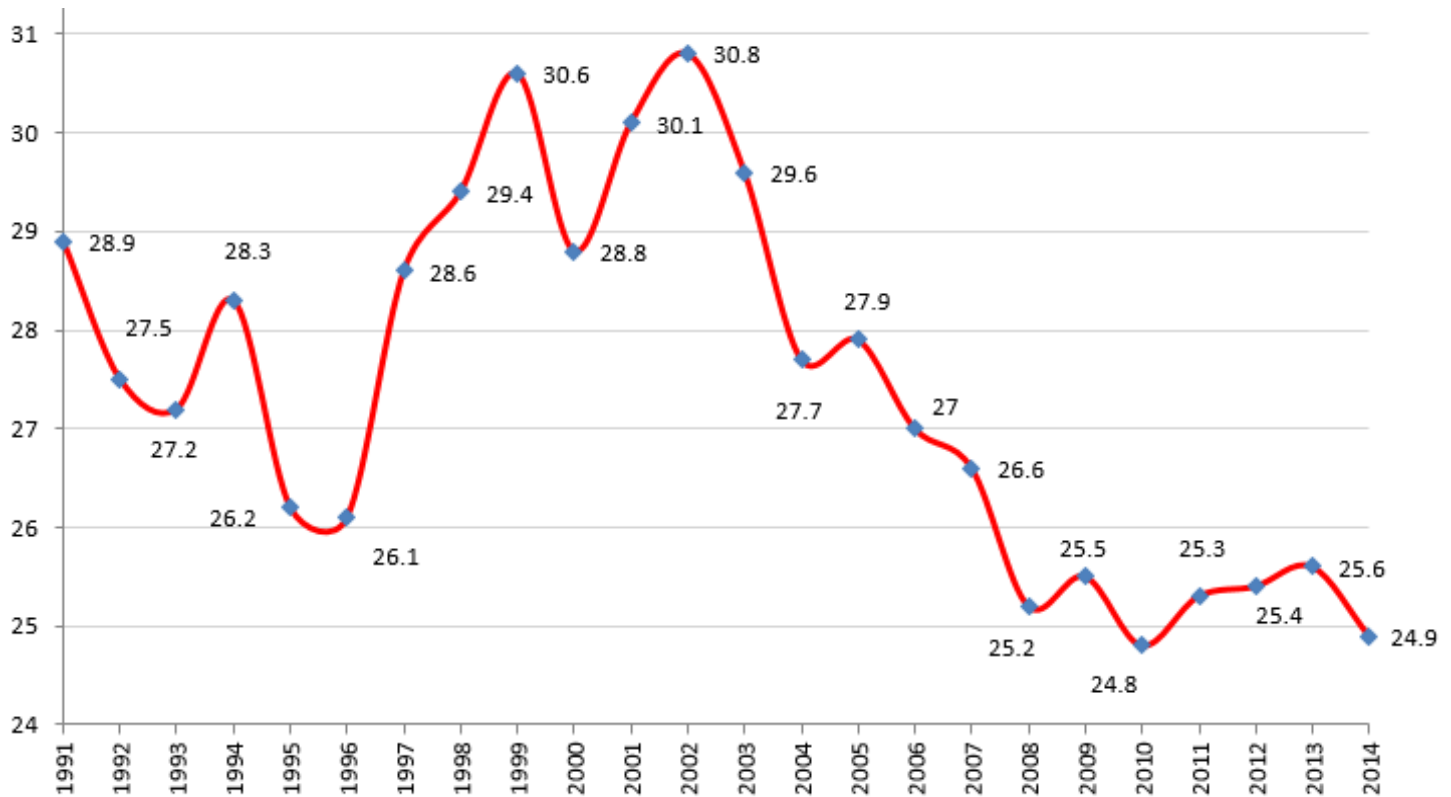


Suicide in Kerala

Population of Kerala as per the census 2014 is 3,39,00,662. Total number of suicide in Kerala during 2014 is 8446. The suicide rate in Kerala for the year 2014 is 24.9/- per lakh.

The rate for 2013 was 25.6/ lakh and the total number of suicide reported 8646. The rate of suicide is remaining steady. Compared to other states suicide rate among youngsters and family suicide are also on the higher side in Kerala.

The following is a Chart showing the rate of suicide from 1991 to 2014 in Kerala.



District wise suicidal data per one lakh population

District / Year	1995	1996	1997	1998	1999	2000	2001	2002	2003	2004	2005
Idukki	48.6	41.1	43.3	43.0	43.0	41.5	49.2	49.7	51.0	42.4	40.3
Kollam	32.0	33.5	32.1	31.2	33.4	33.2	33.9	43.6	43.1	41.0	42.4
Wyanad	44.4	39.1	38.6	39.4	51.7	48.4	39.8	40.6	45.0	36.5	38.0
Thiruvananthapuram	17.2	33.2	40.6	41.3	39.8	41.4	41.4	38.5	32.7	35.5	37.0
Pathanamthitta	23.5	19.8	21.1	27.4	29.4	22.6	32.3	38.2	32.6	32.9	31.4
Thrissur	37.5	33.1	35.1	35.3	37.1	34.0	34.3	34.5	33.7	31.0	31.6
Palakkad	32.3	32.7	33.4	33.2	34.1	34.4	33.1	32.9	33.1	33.0	35.8
Kannur	27.7	29.3	29.2	30.1	27.5	26.7	32.3	32.2	29.5	27.1	25.2
Ernakulam	26.0	23.0	27.5	26.4	26.4	24.7	25.9	27.8	24.0	23.0	23.0
Ksaragode	24.8	22.0	24.1	22.5	24.0	19.0	22.1	26.1	23.5	22.8	21.0
Kottayam	23.5	20.8	23.1	25.1	24.4	21.8	24.6	25.4	26.0	22.5	23.0
Alappuzha	19.9	19.3	20.4	23.6	33.2	22.9	22.9	25.3	25.1	22.5	23.4
Kozhikode	22.0	21.4	24.5	24.6	24.8	23.7	25.5	24.3	22.7	21.4	22.3
Malappuram	12.0	10.1	14.6	14.2	13.5	14.7	11.7	11.8	12.9	12.8	12.0

District / Year	2006	2007	2008	2009	2010	2011	2012	2013	2014
Idukki	38.6	39.5	34.6	34.6	35.5	42.3	34.7	35.38	35.90
Kollam	41.3	42.0	36.4	38.6	34.7	41.2	41.3	43.69	42.81
Wyanad	40.1	36.5	38.2	35.4	34.3	35.3	36.6	37.33	35.95
Thiruvananthapuram	37.8	37.0	34.6	34.4	34.3	37.7	41.1	42.20	38.23
Pathanamthitta	26.6	30.7	24.9	24.3	25.4	23.1	23.1	24.62	21.40
Thrissur	30.3	27.7	27.1	31.5	29.9	29.6	28	28.59	26.68
Palakkad	34.5	32.0	29.2	30.1	27.7	26.8	26.9	27.26	26.27
Kannur	23.4	23.0	23.8	22.8	21.2	21.8	27.2	24.39	23.03
Ernakulam	23.2	23.0	24.6	23.8	24.1	23.4	23.3	21.57	21.82
Ksaragode	18.7	20.5	18.9	22.2	19.1	17.3	20.7	17.31	20.89
Kottayam	22.2	21.3	22.5	23.8	22.8	22	21.9	23.80	25.29
Alappuzha	21.7	22.3	21.0	22.3	22.2	21.5	19	20.31	22.36
Kozhikode	22.0	22.0	19.7	19.8	19.4	19.4	20.6	20.77	18.12
Malappuram	11.3	10.6	10.6	8.9	9.8	8.8	8.3	7.02	7.98

Some important observations are

- Suicide is maximum in Kollam, Thiruvananthapuram, Wayanad and Idukki districts.
- Highest rate of suicide is in Kollam district(41.3/ Lakh) followed by Thiruvananthapuram district (41.1/Lakh), Wayanad (36.6/ lakh) and Idukki district (34.7/ lakh).
- Rate of increase in suicide is highest in Thiruvananthapuram district where it has gone up from 17.2/l in 1995 to 41.1 /l in 2012.
- Suicide rate is consistently low in Malappuram district and is only 8.3/Lakh in 2012 though population is maximum in this district.

Suicide is maximum in the age group 30 to 59 Years (61.9%) Suicide rate is almost same during the year 2011 & 2012 in the age group 30 – 44. Among the age group of 45-59 the rate has reduced to 32.3% from 33 % which is the maximum. In the age group 15-29 years the rate is remaining the same. In the elderly the rate increased by 1.6% compared to previous year.

Age and Suicide in Kerala

Age / Year	2010	2011	2012
Below 14 yrs	1.3%	1%	0.8%
15-29	19.2%	18%	17.7%
30-44	30.3%	30%	29.6%
45-59	31.6%	33%	32.3%
Above 60	17.6%	18%	19.6%

Sex distribution

Sex distribution of the suicide victims are also significant. Suicide is more among males (75%). The Male female ratio is 3:1.

Below the age of 14 years male: female ratio is 52:48

In the age group 15-29 years male: female ratio is 62:38

In the age group 30-44 years male: female ratio is 79:21

In the age group 45 -59 years male: female ratio is 80:20

In the age group above 60 years male: female ratio is 76:24

Maximum percentage of suicide among female is in the age group 15 – 29 years Suicide among male is maximum in the age group 45 to 59 (80%) and minimum in the age group below 14 years.

However attempted suicide is more among women compared to men.

Social status of suicide victims

In Kerala 76% of the suicide are among married persons. But in the Western countries suicide is more among unmarried & separated.

Divorce rate is increasing in the state and rate of suicide among them is 1.3%.

Educational status of suicide victims

Suicide is Maximum among those with Primary & Middle school education (49%) and is least among postgraduates 0.7%. The rate is 1.8% among illiterate.

Profession profile of suicide victims – 2012

House wife	Govt. & Public Sector	Pvt. Sector	Student	Un employed	Self employed	Retired persons	Others
14.1%	1.7%	6.6%	3.1%	8.9%	44.7%	1.1%	19.8%

Suicide rate is maximum among self-employed persons followed by housewives and least among retired persons.

Suicide among unemployed persons have increased by 1.9% compared to previous year. There is no significant increase in suicide rate among housewives and students compared to the previous year.

Causes of Suicide (SCRB data) in %

Causes/Year	2009	2010	2011	2012
Family problems	40.2	42	47	44.1
Physical illness	17.6	16	13	12.3
Mental illness	16.3	15	12	13.9
Financial problems	6.5	5.2	4	4.9
Unemployment	0.2	0.2	0.2	0.3
Failure in examination	0.5	0.7	0.7	0.4
Love failure	1.4	1.6	1.2	1.3
Job related problem	0.8	0.2	0.2	0.8
Drug abuse/addiction	3	3.4	3.4	3.2
Others	14.5	15.7	18.3	18.7

In 2012 family problems is the most important cause of suicide in the State according to SCRB. Mental illness is the cause of suicide in 5%of cases according to NCRB. According to SCRB, Mental illness is the second common cause of suicide (13.9%). Physical illness is the third common cause of suicide. Alcoholism and drug abuse constitute 3.2% of suicide.